

The City North logo, featuring the words "CITY" and "NORTH" in a bold, sans-serif font, with a small circle above the "Y" in "CITY". Below this, the text "London N4" is written in a smaller, italicized font. The entire logo is enclosed within a thick black rectangular border with inward-pointing corners.

THE LINEAR BUILDING

A New Destination

# City North Finsbury Park London, N4

Welcome to City North, set across four sleek and stylish buildings including two awe-inspiring towers, this exclusive collection of spacious suites, 1, 2, 3 & 4 bedroom apartments, duplexes & penthouses offers you the very best of 360° living, only 15 minutes from the heart of the City of London.

CITY NORTH

2

CITY NORTH

3

Computer generated image of City North from Finsbury Park.



# A New Landmark for London

City North is a new landmark and a vibrant, cosmopolitan development in Finsbury Park. Integrated within a growing cultural community, it is only moments from underground and mainline stations that can transport you to the sights and attractions of central London within minutes.



C I T Y   N O R T H





Aerial photograph of London with City North illustrated.

# Change Your Perspective

Each morning will be a fresh opportunity to look out from your home and see the seasons changing against the natural backdrop of Finsbury Park - a truly beautiful and cosmopolitan space that attracts people from all over the capital. The East & West Reservoirs are close by for walks, watersports and open-water swimming.



# Catering for all your needs

You will enjoy an impressive sense of arrival when you enter City North. With a spacious, contemporary reception area that is sure to impress your guests, you'll be welcomed home at any time of the day or night thanks to a 24-hour concierge service. There's also a residents' lounge where you can entertain, or simply unwind after a busy and fulfilling day.

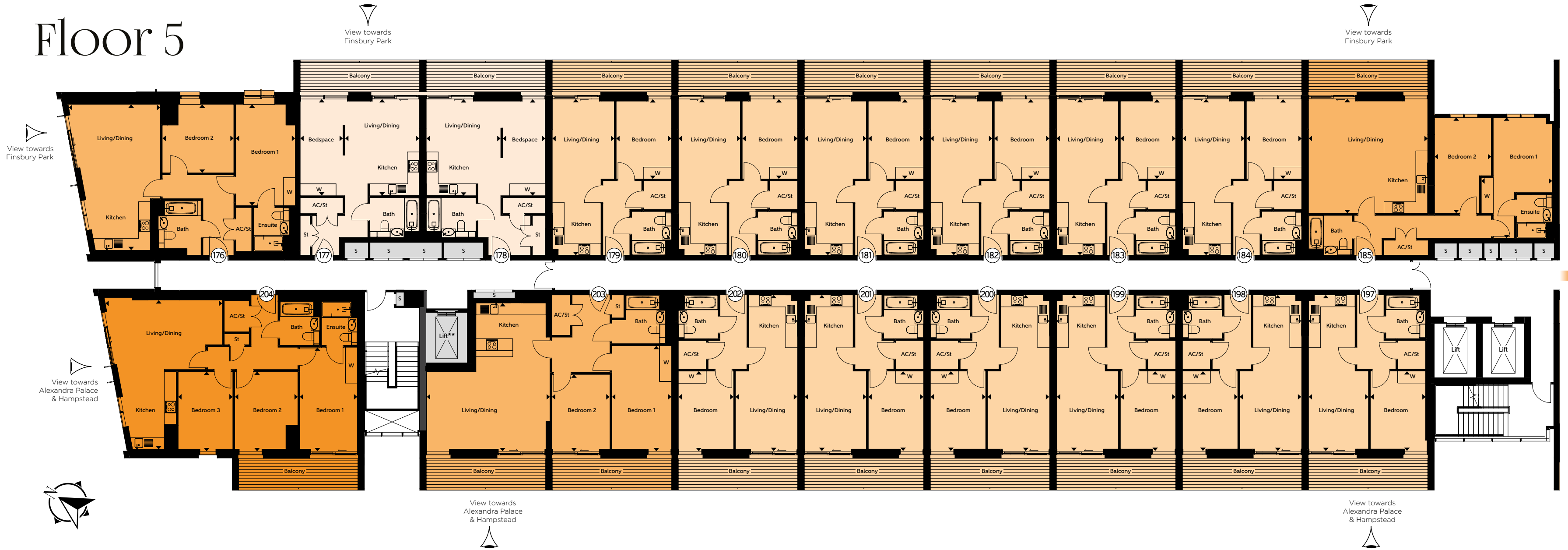


# Development Layout



**Please note:**  
Bicycle storage and the refuse & recycling store are located in the basement, accessible directly from The Linear Building.

# Floor 5



**Apartment 176**

|                       |                |                  |
|-----------------------|----------------|------------------|
| Kitchen/Living/Dining | 7.35m x 4.64m  | 24'1" x 15'3"    |
| Bedroom 1             | 3.60m x 3.45m  | 11'10" x 11'4"   |
| Bedroom 2             | 5.10m x 3.00m  | 16'9" x 9'10"    |
| <b>Total Area</b>     | <b>80 sq m</b> | <b>861 sq ft</b> |

**Apartment 179**

|                       |                |                  |
|-----------------------|----------------|------------------|
| Kitchen/Living/Dining | 7.86m x 3.12m  | 25'9" x 10'3"    |
| Bedroom               | 4.03m x 2.78m  | 13'3" x 9'1"     |
| <b>Total Area</b>     | <b>47 sq m</b> | <b>506 sq ft</b> |

**Apartment 182**

|                       |                |                  |
|-----------------------|----------------|------------------|
| Kitchen/Living/Dining | 7.86m x 3.12m  | 25'9" x 10'3"    |
| Bedroom               | 4.03m x 2.78m  | 13'3" x 9'1"     |
| <b>Total Area</b>     | <b>47 sq m</b> | <b>506 sq ft</b> |

**Apartment 185**

|                       |                |                  |
|-----------------------|----------------|------------------|
| Kitchen/Living/Dining | 6.00m x 5.76m  | 19'8" x 18'11"   |
| Bedroom 1             | 6.07m x 2.96m  | 19'11" x 9'9"    |
| Bedroom 2             | 4.82m x 2.85m  | 15'10" x 9'4"    |
| <b>Total Area</b>     | <b>83 sq m</b> | <b>893 sq ft</b> |

**Apartment 199**

|                       |                |                  |
|-----------------------|----------------|------------------|
| Kitchen/Living/Dining | 7.86m x 3.12m  | 25'9" x 10'3"    |
| Bedroom               | 4.03m x 2.78m  | 13'3" x 9'1"     |
| <b>Total Area</b>     | <b>47 sq m</b> | <b>506 sq ft</b> |

**Apartment 202**

|                       |                |                  |
|-----------------------|----------------|------------------|
| Kitchen/Living/Dining | 7.86m x 3.12m  | 25'9" x 10'3"    |
| Bedroom               | 4.03m x 2.78m  | 13'3" x 9'1"     |
| <b>Total Area</b>     | <b>47 sq m</b> | <b>506 sq ft</b> |

**Suite 177**

|                       |                |                  |
|-----------------------|----------------|------------------|
| Kitchen/Living/Dining | 4.86m x 3.75m  | 15'11" x 12'4"   |
| Bedspace              | 4.86m x 2.15m  | 15'11" x 7'1"    |
| <b>Total Area</b>     | <b>44 sq m</b> | <b>474 sq ft</b> |

**Apartment 180**

|                       |                |                  |
|-----------------------|----------------|------------------|
| Kitchen/Living/Dining | 7.86m x 3.12m  | 25'9" x 10'3"    |
| Bedroom               | 4.03m x 2.78m  | 13'3" x 9'1"     |
| <b>Total Area</b>     | <b>47 sq m</b> | <b>506 sq ft</b> |

**Apartment 183**

|                       |                |                  |
|-----------------------|----------------|------------------|
| Kitchen/Living/Dining | 7.86m x 3.12m  | 25'9" x 10'3"    |
| Bedroom               | 4.03m x 2.78m  | 13'3" x 9'1"     |
| <b>Total Area</b>     | <b>47 sq m</b> | <b>506 sq ft</b> |

**Apartment 197**

|                       |                |                  |
|-----------------------|----------------|------------------|
| Kitchen/Living/Dining | 7.86m x 3.01m  | 25'9" x 9'11"    |
| Bedroom               | 4.03m x 2.85m  | 13'3" x 9'4"     |
| <b>Total Area</b>     | <b>46 sq m</b> | <b>495 sq ft</b> |

**Apartment 200**

|                       |                |                  |
|-----------------------|----------------|------------------|
| Kitchen/Living/Dining | 7.86m x 3.12m  | 25'9" x 10'3"    |
| Bedroom               | 4.03m x 2.78m  | 13'3" x 9'1"     |
| <b>Total Area</b>     | <b>47 sq m</b> | <b>506 sq ft</b> |

**Apartment 203**

|                       |                |                  |
|-----------------------|----------------|------------------|
| Kitchen/Living/Dining | 7.46m x 6.20m  | 24'6" x 20'4"    |
| Bedroom 1             | 5.31m x 3.00m  | 17'5" x 9'10"    |
| Bedroom 2             | 3.86m x 2.92m  | 12'8" x 9'7"     |
| <b>Total Area</b>     | <b>85 sq m</b> | <b>915 sq ft</b> |

**Suite 178**

|                       |                |                  |
|-----------------------|----------------|------------------|
| Kitchen/Living/Dining | 4.86m x 3.75m  | 15'11" x 12'4"   |
| Bedspace              | 4.86m x 2.15m  | 15'11" x 7'1"    |
| <b>Total Area</b>     | <b>44 sq m</b> | <b>474 sq ft</b> |

**Apartment 181**

|                       |                |                  |
|-----------------------|----------------|------------------|
| Kitchen/Living/Dining | 7.86m x 3.12m  | 25'9" x 10'3"    |
| Bedroom               | 4.03m x 2.78m  | 13'3" x 9'1"     |
| <b>Total Area</b>     | <b>47 sq m</b> | <b>506 sq ft</b> |

**Apartment 184**

|                       |                |                  |
|-----------------------|----------------|------------------|
| Kitchen/Living/Dining | 7.86m x 3.12m  | 25'9" x 10'3"    |
| Bedroom               | 4.03m x 2.78m  | 13'3" x 9'1"     |
| <b>Total Area</b>     | <b>47 sq m</b> | <b>506 sq ft</b> |

**Apartment 198**

|                       |                |                  |
|-----------------------|----------------|------------------|
| Kitchen/Living/Dining | 7.86m x 3.12m  | 25'9" x 10'3"    |
| Bedroom               | 4.03m x 2.78m  | 13'3" x 9'1"     |
| <b>Total Area</b>     | <b>47 sq m</b> | <b>506 sq ft</b> |

**Apartment 201**

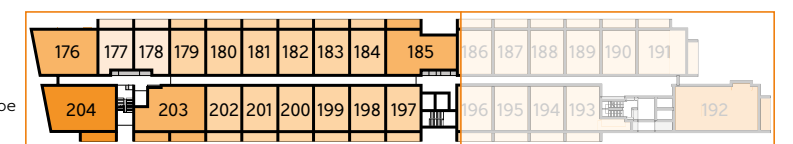
|                       |                |                  |
|-----------------------|----------------|------------------|
| Kitchen/Living/Dining | 7.86m x 3.12m  | 25'9" x 10'3"    |
| Bedroom               | 4.03m x 2.78m  | 13'3" x 9'1"     |
| <b>Total Area</b>     | <b>47 sq m</b> | <b>506 sq ft</b> |

**Apartment 204**

|                       |                |                  |
|-----------------------|----------------|------------------|
| Kitchen/Living/Dining | 7.65m x 5.93m  | 25'1" x 19'5"    |
| Bedroom 1             | 4.01m x 2.75m  | 13'2" x 9'0"     |
| Bedroom 2             | 4.01m x 3.17m  | 10'5" x 13'2"    |
| Bedroom 3             | 5.23m x 2.90m  | 17'2" x 9'6"     |
| <b>Total Area</b>     | <b>91 sq m</b> | <b>980 sq ft</b> |

Suite Apartment
  1 Bedroom Apartment
  2 Bedroom Apartment
  3 Bedroom Apartment

The dimensions given are accurate to within plus or minus two inches (50mm) from floor level and include wardrobe spaces where applicable. They are not intended to be used for carpet sizes, appliance space or items of furniture. The information is for general guidance only. S=Services \*\*=Firefighters lift access only.





# Floor 5



**Apartment 186**

|                       |                |                  |
|-----------------------|----------------|------------------|
| Kitchen/Living/Dining | 7.86m x 3.09m  | 25'9" x 10'2"    |
| Bedroom               | 4.03m x 2.78m  | 13'3" x 9'1"     |
| <b>Total Area</b>     | <b>47 sq m</b> | <b>506 sq ft</b> |

**Apartment 187**

|                       |                |                  |
|-----------------------|----------------|------------------|
| Kitchen/Living/Dining | 7.86m x 3.12m  | 25'9" x 10'3"    |
| Bedroom               | 4.03m x 2.78m  | 13'3" x 9'1"     |
| <b>Total Area</b>     | <b>47 sq m</b> | <b>506 sq ft</b> |

**Apartment 188**

|                       |                |                  |
|-----------------------|----------------|------------------|
| Kitchen/Living/Dining | 7.86m x 3.12m  | 25'9" x 10'3"    |
| Bedroom               | 4.03m x 2.78m  | 13'3" x 9'1"     |
| <b>Total Area</b>     | <b>47 sq m</b> | <b>506 sq ft</b> |

**Apartment 189**

|                       |                |                  |
|-----------------------|----------------|------------------|
| Kitchen/Living/Dining | 7.86m x 3.12m  | 25'9" x 10'3"    |
| Bedroom               | 4.03m x 2.78m  | 13'3" x 9'1"     |
| <b>Total Area</b>     | <b>47 sq m</b> | <b>506 sq ft</b> |

**Apartment 190**

|                       |                |                  |
|-----------------------|----------------|------------------|
| Kitchen/Living/Dining | 7.86m x 3.09m  | 25'9" x 10'2"    |
| Bedroom               | 4.03m x 2.78m  | 13'3" x 9'1"     |
| <b>Total Area</b>     | <b>47 sq m</b> | <b>506 sq ft</b> |

**Apartment 191**

|                       |                |                  |
|-----------------------|----------------|------------------|
| Kitchen/Living/Dining | 7.86m x 3.12m  | 25'9" x 10'3"    |
| Bedroom               | 4.03m x 2.78m  | 13'3" x 9'1"     |
| <b>Total Area</b>     | <b>47 sq m</b> | <b>506 sq ft</b> |

**Apartment 192**

|                       |                 |                   |
|-----------------------|-----------------|-------------------|
| Kitchen/Living/Dining | 8.31m x 4.70m   | 27'3" x 15'5"     |
| Bedroom 1             | 6.29m x 3.15m   | 20'8" x 10'4"     |
| Bedroom 2             | 4.02m x 3.81m   | 13'2" x 12'6"     |
| Bedroom 3             | 5.99m x 2.96m   | 19'8" x 9'9"      |
| <b>Total Area</b>     | <b>115 sq m</b> | <b>1238 sq ft</b> |

**Apartment 193**

|                       |                |                  |
|-----------------------|----------------|------------------|
| Kitchen/Living/Dining | 8.64m x 5.56m  | 28'4" x 18'3"    |
| Bedroom               | 5.56m x 2.74m  | 18'3" x 9'0"     |
| <b>Total Area</b>     | <b>57 sq m</b> | <b>614 sq ft</b> |

**Apartment 194**

|                       |                |                  |
|-----------------------|----------------|------------------|
| Kitchen/Living/Dining | 7.86m x 3.12m  | 25'9" x 10'3"    |
| Bedroom               | 4.03m x 2.78m  | 13'3" x 9'1"     |
| <b>Total Area</b>     | <b>47 sq m</b> | <b>506 sq ft</b> |

**Apartment 195**

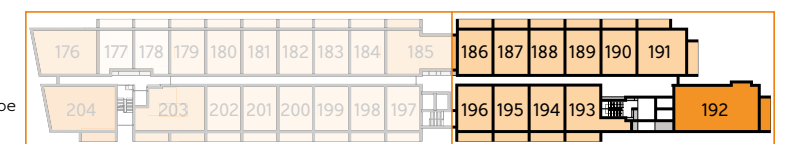
|                       |                |                  |
|-----------------------|----------------|------------------|
| Kitchen/Living/Dining | 7.86m x 3.12m  | 25'9" x 10'3"    |
| Bedroom               | 4.03m x 2.78m  | 13'3" x 9'1"     |
| <b>Total Area</b>     | <b>47 sq m</b> | <b>506 sq ft</b> |

**Apartment 196**

|                       |                |                  |
|-----------------------|----------------|------------------|
| Kitchen/Living/Dining | 7.86m x 3.09m  | 25'9" x 10'2"    |
| Bedroom               | 4.03m x 2.78m  | 13'3" x 9'1"     |
| <b>Total Area</b>     | <b>47 sq m</b> | <b>506 sq ft</b> |

Suite Apartment
  1 Bedroom Apartment
  2 Bedroom Apartment
  3 Bedroom Apartment

The dimensions given are accurate to within plus or minus two inches (50mm) from floor level and include wardrobe spaces where applicable. They are not intended to be used for carpet sizes, appliance space or items of furniture. The information is for general guidance only. S=Services.





# Floor 6



**Apartment 205**

|                       |                |                  |
|-----------------------|----------------|------------------|
| Kitchen/Living/Dining | 7.35m x 4.64m  | 24'1" x 15'3"    |
| Bedroom 1             | 3.60m x 3.45m  | 11'10" x 11'4"   |
| Bedroom 2             | 5.10m x 3.00m  | 16'9" x 9'10"    |
| <b>Total Area</b>     | <b>80 sq m</b> | <b>861 sq ft</b> |

**Suite 206**

|                       |                |                  |
|-----------------------|----------------|------------------|
| Kitchen/Living/Dining | 4.86m x 3.75m  | 15'11" x 12'4"   |
| Bedspace              | 4.86m x 2.15m  | 15'11" x 7'1"    |
| <b>Total Area</b>     | <b>44 sq m</b> | <b>474 sq ft</b> |

**Suite 207**

|                       |                |                  |
|-----------------------|----------------|------------------|
| Kitchen/Living/Dining | 4.86m x 3.75m  | 15'11" x 12'4"   |
| Bedspace              | 4.86m x 2.15m  | 15'11" x 7'1"    |
| <b>Total Area</b>     | <b>44 sq m</b> | <b>474 sq ft</b> |

**Apartment 208**

|                       |                |                  |
|-----------------------|----------------|------------------|
| Kitchen/Living/Dining | 7.86m x 3.12m  | 25'9" x 10'3"    |
| Bedroom               | 4.03m x 2.78m  | 13'3" x 9'1"     |
| <b>Total Area</b>     | <b>47 sq m</b> | <b>506 sq ft</b> |

**Apartment 209**

|                       |                |                  |
|-----------------------|----------------|------------------|
| Kitchen/Living/Dining | 7.86m x 3.12m  | 25'9" x 10'3"    |
| Bedroom               | 4.03m x 2.78m  | 13'3" x 9'1"     |
| <b>Total Area</b>     | <b>47 sq m</b> | <b>506 sq ft</b> |

**Apartment 210**

|                       |                |                  |
|-----------------------|----------------|------------------|
| Kitchen/Living/Dining | 7.86m x 3.12m  | 25'9" x 10'3"    |
| Bedroom               | 4.03m x 2.78m  | 13'3" x 9'1"     |
| <b>Total Area</b>     | <b>47 sq m</b> | <b>506 sq ft</b> |

**Apartment 211**

|                       |                |                  |
|-----------------------|----------------|------------------|
| Kitchen/Living/Dining | 7.86m x 3.12m  | 25'9" x 10'3"    |
| Bedroom               | 4.03m x 2.78m  | 13'3" x 9'1"     |
| <b>Total Area</b>     | <b>47 sq m</b> | <b>506 sq ft</b> |

**Apartment 212**

|                       |                |                  |
|-----------------------|----------------|------------------|
| Kitchen/Living/Dining | 7.86m x 3.12m  | 25'9" x 10'3"    |
| Bedroom               | 4.03m x 2.78m  | 13'3" x 9'1"     |
| <b>Total Area</b>     | <b>47 sq m</b> | <b>506 sq ft</b> |

**Apartment 213**

|                       |                |                  |
|-----------------------|----------------|------------------|
| Kitchen/Living/Dining | 7.86m x 3.12m  | 25'9" x 10'3"    |
| Bedroom               | 4.03m x 2.78m  | 13'3" x 9'1"     |
| <b>Total Area</b>     | <b>47 sq m</b> | <b>506 sq ft</b> |

**Apartment 214**

|                       |                |                  |
|-----------------------|----------------|------------------|
| Kitchen/Living/Dining | 6.00m x 5.76m  | 19'8" x 18'11"   |
| Bedroom 1             | 6.07m x 2.96m  | 19'11" x 9'9"    |
| Bedroom 2             | 4.82m x 2.85m  | 15'10" x 9'4"    |
| <b>Total Area</b>     | <b>85 sq m</b> | <b>915 sq ft</b> |

**Apartment 226**

|                       |                |                  |
|-----------------------|----------------|------------------|
| Kitchen/Living/Dining | 7.86m x 3.01m  | 25'9" x 9'11"    |
| Bedroom               | 4.03m x 2.83m  | 13'3" x 9'4"     |
| <b>Total Area</b>     | <b>46 sq m</b> | <b>495 sq ft</b> |

**Apartment 227**

|                       |                |                  |
|-----------------------|----------------|------------------|
| Kitchen/Living/Dining | 7.86m x 3.12m  | 25'9" x 10'3"    |
| Bedroom               | 4.03m x 2.78m  | 13'3" x 9'1"     |
| <b>Total Area</b>     | <b>47 sq m</b> | <b>506 sq ft</b> |

**Apartment 228**

|                       |                |                  |
|-----------------------|----------------|------------------|
| Kitchen/Living/Dining | 7.86m x 3.12m  | 25'9" x 10'3"    |
| Bedroom               | 4.03m x 2.78m  | 13'3" x 9'1"     |
| <b>Total Area</b>     | <b>47 sq m</b> | <b>506 sq ft</b> |

**Apartment 229**

|                       |                |                  |
|-----------------------|----------------|------------------|
| Kitchen/Living/Dining | 7.86m x 3.12m  | 25'9" x 10'3"    |
| Bedroom               | 4.03m x 2.78m  | 13'3" x 9'1"     |
| <b>Total Area</b>     | <b>47 sq m</b> | <b>506 sq ft</b> |

**Apartment 230**

|                       |                |                  |
|-----------------------|----------------|------------------|
| Kitchen/Living/Dining | 7.86m x 3.12m  | 25'9" x 10'3"    |
| Bedroom               | 4.03m x 2.78m  | 13'3" x 9'1"     |
| <b>Total Area</b>     | <b>47 sq m</b> | <b>506 sq ft</b> |

**Apartment 231**

|                       |                |                  |
|-----------------------|----------------|------------------|
| Kitchen/Living/Dining | 7.86m x 3.12m  | 25'9" x 10'3"    |
| Bedroom               | 4.03m x 2.78m  | 13'3" x 9'1"     |
| <b>Total Area</b>     | <b>47 sq m</b> | <b>506 sq ft</b> |

**Apartment 232**

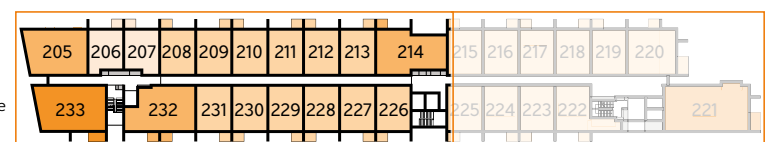
|                       |                |                  |
|-----------------------|----------------|------------------|
| Kitchen/Living/Dining | 7.46m x 6.20m  | 24'6" x 20'4"    |
| Bedroom 1             | 5.31m x 3.00m  | 17'5" x 9'10"    |
| Bedroom 2             | 3.86m x 2.92m  | 12'8" x 9'7"     |
| <b>Total Area</b>     | <b>85 sq m</b> | <b>915 sq ft</b> |

**Apartment 233**

|                       |                |                  |
|-----------------------|----------------|------------------|
| Kitchen/Living/Dining | 7.78m x 5.93m  | 25'6" x 19'5"    |
| Bedroom 1             | 5.23m x 2.82m  | 17'2" x 9'6"     |
| Bedroom 2             | 4.03m x 3.25m  | 10'5" x 13'2"    |
| Bedroom 3             | 4.03m x 2.75m  | 13'3" x 9'0"     |
| <b>Total Area</b>     | <b>92 sq m</b> | <b>990 sq ft</b> |

Suite Apartment
  1 Bedroom Apartment
  2 Bedroom Apartment
  3 Bedroom Apartment

The dimensions given are accurate to within plus or minus two inches (50mm) from floor level and include wardrobe spaces where applicable. They are not intended to be used for carpet sizes, appliance space or items of furniture. The information is for general guidance only. S=Services \*\*=Firefighters lift access only.





# Floor 6



**Apartment 215**

|                       |                |                  |
|-----------------------|----------------|------------------|
| Kitchen/Living/Dining | 7.86m x 3.09m  | 25'9" x 10'2"    |
| Bedroom               | 4.03m x 2.78m  | 13'3" x 9'1"     |
| <b>Total Area</b>     | <b>47 sq m</b> | <b>506 sq ft</b> |

**Apartment 218**

|                       |                |                  |
|-----------------------|----------------|------------------|
| Kitchen/Living/Dining | 7.86m x 3.12m  | 25'9" x 10'3"    |
| Bedroom               | 4.03m x 2.78m  | 13'3" x 9'1"     |
| <b>Total Area</b>     | <b>47 sq m</b> | <b>506 sq ft</b> |

**Apartment 221**

|                       |                 |                   |
|-----------------------|-----------------|-------------------|
| Kitchen/Living/Dining | 8.31m x 4.70m   | 27'3" x 15'5"     |
| Bedroom 1             | 6.29m x 3.15m   | 20'8" x 10'4"     |
| Bedroom 2             | 4.02m x 3.81m   | 13'2" x 12'6"     |
| Bedroom 3             | 5.99m x 2.96m   | 19'8" x 9'9"      |
| <b>Total Area</b>     | <b>115 sq m</b> | <b>1238 sq ft</b> |

**Apartment 224**

|                       |                |                  |
|-----------------------|----------------|------------------|
| Kitchen/Living/Dining | 7.86m x 3.12m  | 25'9" x 10'3"    |
| Bedroom               | 4.03m x 2.78m  | 13'3" x 9'1"     |
| <b>Total Area</b>     | <b>47 sq m</b> | <b>506 sq ft</b> |

**Apartment 216**

|                       |                |                  |
|-----------------------|----------------|------------------|
| Kitchen/Living/Dining | 7.86m x 3.12m  | 25'9" x 10'3"    |
| Bedroom               | 4.03m x 2.78m  | 13'3" x 9'1"     |
| <b>Total Area</b>     | <b>47 sq m</b> | <b>506 sq ft</b> |

**Apartment 219**

|                       |                |                  |
|-----------------------|----------------|------------------|
| Kitchen/Living/Dining | 7.86m x 3.12m  | 25'9" x 10'3"    |
| Bedroom               | 4.03m x 2.78m  | 13'3" x 9'1"     |
| <b>Total Area</b>     | <b>47 sq m</b> | <b>506 sq ft</b> |

**Apartment 222**

|                       |                |                  |
|-----------------------|----------------|------------------|
| Kitchen/Living/Dining | 8.64m x 5.56m  | 28'4" x 18'3"    |
| Bedroom               | 5.56m x 2.74m  | 18'3" x 9'0"     |
| <b>Total Area</b>     | <b>57 sq m</b> | <b>614 sq ft</b> |

**Apartment 225**

|                       |                |                  |
|-----------------------|----------------|------------------|
| Kitchen/Living/Dining | 7.86m x 3.09m  | 25'9" x 10'2"    |
| Bedroom               | 4.03m x 2.78m  | 13'3" x 9'1"     |
| <b>Total Area</b>     | <b>47 sq m</b> | <b>506 sq ft</b> |

**Apartment 217**

|                       |                |                  |
|-----------------------|----------------|------------------|
| Kitchen/Living/Dining | 7.86m x 3.12m  | 25'9" x 10'3"    |
| Bedroom               | 4.03m x 2.78m  | 13'3" x 9'1"     |
| <b>Total Area</b>     | <b>47 sq m</b> | <b>506 sq ft</b> |

**Apartment 220**

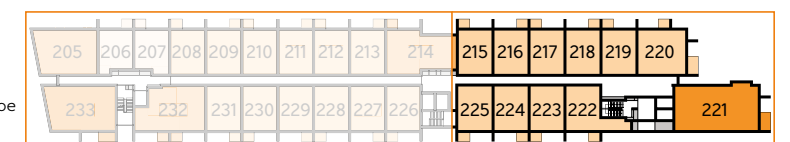
|                       |                |                  |
|-----------------------|----------------|------------------|
| Kitchen/Living/Dining | 7.86m x 4.95m  | 25'9" x 16'3"    |
| Bedroom               | 4.26m x 3.45m  | 13'2" x 11'4"    |
| <b>Total Area</b>     | <b>65 sq m</b> | <b>700 sq ft</b> |

**Apartment 223**

|                       |                |                  |
|-----------------------|----------------|------------------|
| Kitchen/Living/Dining | 7.86m x 3.12m  | 25'9" x 10'3"    |
| Bedroom               | 4.03m x 2.78m  | 13'3" x 9'1"     |
| <b>Total Area</b>     | <b>47 sq m</b> | <b>506 sq ft</b> |

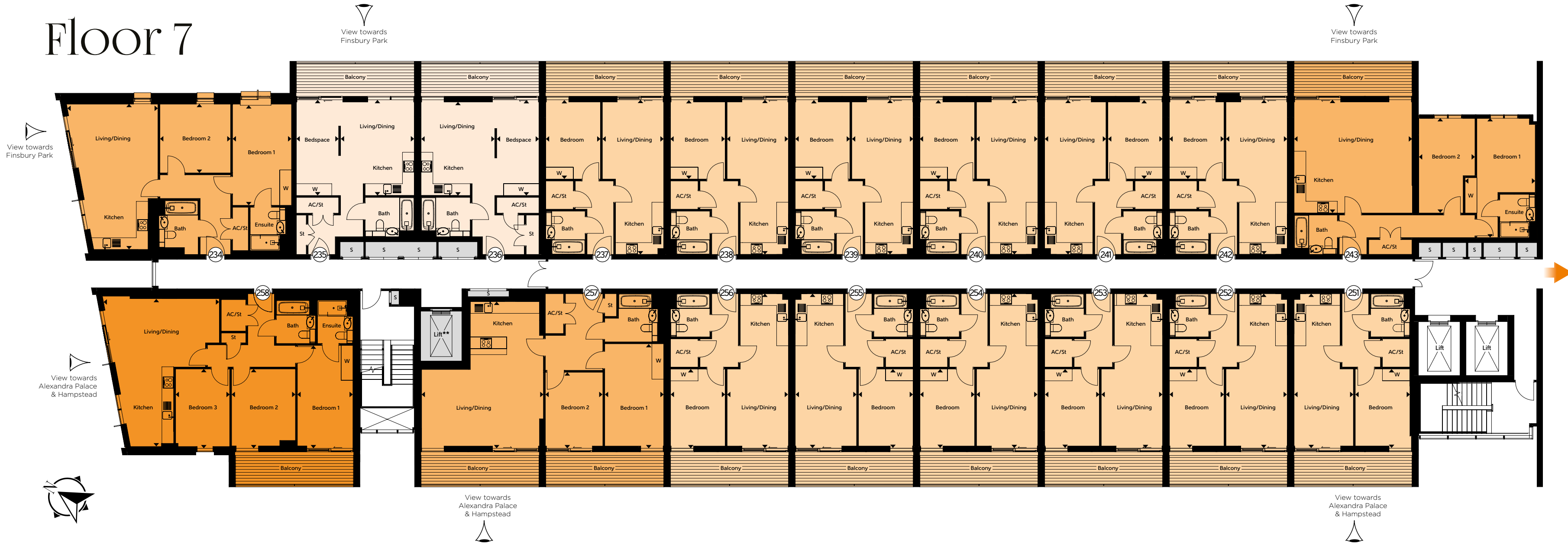
Suite Apartment
  1 Bedroom Apartment
  2 Bedroom Apartment
  3 Bedroom Apartment

The dimensions given are accurate to within plus or minus two inches (50mm) from floor level and include wardrobe spaces where applicable. They are not intended to be used for carpet sizes, appliance space or items of furniture. The information is for general guidance only. S=Services.





# Floor 7



**Apartment 234**

|                       |                |                  |
|-----------------------|----------------|------------------|
| Kitchen/Living/Dining | 7.35m x 4.64m  | 24'1" x 15'3"    |
| Bedroom 1             | 3.60m x 3.45m  | 11'10" x 11'4"   |
| Bedroom 2             | 5.10m x 3.00m  | 16'9" x 9'10"    |
| <b>Total Area</b>     | <b>82 sq m</b> | <b>883 sq ft</b> |

**Apartment 237**

|                       |                |                  |
|-----------------------|----------------|------------------|
| Kitchen/Living/Dining | 7.86m x 3.12m  | 25'9" x 10'3"    |
| Bedroom               | 4.03m x 2.78m  | 13'3" x 9'1"     |
| <b>Total Area</b>     | <b>47 sq m</b> | <b>506 sq ft</b> |

**Apartment 240**

|                       |                |                  |
|-----------------------|----------------|------------------|
| Kitchen/Living/Dining | 7.86m x 3.12m  | 25'9" x 10'3"    |
| Bedroom               | 4.03m x 2.78m  | 13'3" x 9'1"     |
| <b>Total Area</b>     | <b>47 sq m</b> | <b>506 sq ft</b> |

**Apartment 243**

|                       |                |                  |
|-----------------------|----------------|------------------|
| Kitchen/Living/Dining | 6.00m x 5.76m  | 19'8" x 18'11"   |
| Bedroom 1             | 6.07m x 2.96m  | 19'11" x 9'9"    |
| Bedroom 2             | 4.82m x 2.85m  | 15'10" x 9'4"    |
| <b>Total Area</b>     | <b>83 sq m</b> | <b>893 sq ft</b> |

**Apartment 253**

|                       |                |                  |
|-----------------------|----------------|------------------|
| Kitchen/Living/Dining | 7.86m x 3.12m  | 25'9" x 10'3"    |
| Bedroom               | 4.03m x 2.78m  | 13'3" x 9'1"     |
| <b>Total Area</b>     | <b>47 sq m</b> | <b>506 sq ft</b> |

**Apartment 256**

|                       |                |                  |
|-----------------------|----------------|------------------|
| Kitchen/Living/Dining | 7.86m x 3.12m  | 25'9" x 10'3"    |
| Bedroom               | 4.03m x 2.78m  | 13'3" x 9'1"     |
| <b>Total Area</b>     | <b>47 sq m</b> | <b>506 sq ft</b> |

**Suite 235**

|                       |                |                  |
|-----------------------|----------------|------------------|
| Kitchen/Living/Dining | 4.86m x 3.75m  | 15'11" x 12'4"   |
| Bedspace              | 4.86m x 2.15m  | 15'11" x 7'1"    |
| <b>Total Area</b>     | <b>44 sq m</b> | <b>474 sq ft</b> |

**Apartment 238**

|                       |                |                  |
|-----------------------|----------------|------------------|
| Kitchen/Living/Dining | 7.86m x 3.12m  | 25'9" x 10'3"    |
| Bedroom               | 4.03m x 2.78m  | 13'3" x 9'1"     |
| <b>Total Area</b>     | <b>47 sq m</b> | <b>506 sq ft</b> |

**Apartment 241**

|                       |                |                  |
|-----------------------|----------------|------------------|
| Kitchen/Living/Dining | 7.86m x 3.12m  | 25'9" x 10'3"    |
| Bedroom               | 4.03m x 2.78m  | 13'3" x 9'1"     |
| <b>Total Area</b>     | <b>47 sq m</b> | <b>506 sq ft</b> |

**Apartment 251**

|                       |                |                  |
|-----------------------|----------------|------------------|
| Kitchen/Living/Dining | 7.86m x 3.01m  | 25'9" x 9'11"    |
| Bedroom               | 4.03m x 2.85m  | 13'3" x 9'4"     |
| <b>Total Area</b>     | <b>46 sq m</b> | <b>495 sq ft</b> |

**Apartment 254**

|                       |                |                  |
|-----------------------|----------------|------------------|
| Kitchen/Living/Dining | 7.86m x 3.12m  | 25'9" x 10'3"    |
| Bedroom               | 4.03m x 2.78m  | 13'3" x 9'1"     |
| <b>Total Area</b>     | <b>47 sq m</b> | <b>506 sq ft</b> |

**Apartment 257**

|                       |                |                  |
|-----------------------|----------------|------------------|
| Kitchen/Living/Dining | 7.46m x 6.20m  | 24'6" x 20'4"    |
| Bedroom 1             | 5.31m x 3.00m  | 17'5" x 9'10"    |
| Bedroom 2             | 3.86m x 2.92m  | 12'8" x 9'7"     |
| <b>Total Area</b>     | <b>85 sq m</b> | <b>915 sq ft</b> |

**Suite 236**

|                       |                |                  |
|-----------------------|----------------|------------------|
| Kitchen/Living/Dining | 4.86m x 3.75m  | 15'11" x 12'4"   |
| Bedspace              | 4.86m x 2.15m  | 15'11" x 7'1"    |
| <b>Total Area</b>     | <b>44 sq m</b> | <b>474 sq ft</b> |

**Apartment 239**

|                       |                |                  |
|-----------------------|----------------|------------------|
| Kitchen/Living/Dining | 7.86m x 3.12m  | 25'9" x 10'3"    |
| Bedroom               | 4.03m x 2.78m  | 13'3" x 9'1"     |
| <b>Total Area</b>     | <b>47 sq m</b> | <b>506 sq ft</b> |

**Apartment 242**

|                       |                |                  |
|-----------------------|----------------|------------------|
| Kitchen/Living/Dining | 7.86m x 3.12m  | 25'9" x 10'3"    |
| Bedroom               | 4.03m x 2.78m  | 13'3" x 9'1"     |
| <b>Total Area</b>     | <b>47 sq m</b> | <b>506 sq ft</b> |

**Apartment 252**

|                       |                |                  |
|-----------------------|----------------|------------------|
| Kitchen/Living/Dining | 7.86m x 3.12m  | 25'9" x 10'3"    |
| Bedroom               | 4.03m x 2.78m  | 13'3" x 9'1"     |
| <b>Total Area</b>     | <b>47 sq m</b> | <b>506 sq ft</b> |

**Apartment 255**

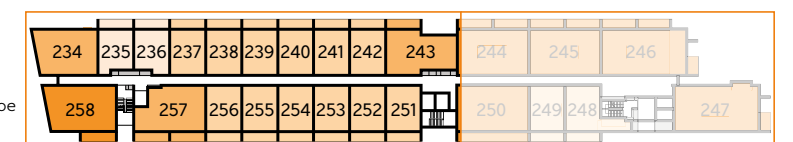
|                       |                |                  |
|-----------------------|----------------|------------------|
| Kitchen/Living/Dining | 7.86m x 3.12m  | 25'9" x 10'3"    |
| Bedroom               | 4.03m x 2.78m  | 13'3" x 9'1"     |
| <b>Total Area</b>     | <b>47 sq m</b> | <b>506 sq ft</b> |

**Apartment 258**

|                       |                |                  |
|-----------------------|----------------|------------------|
| Kitchen/Living/Dining | 7.78m x 5.93m  | 25'6" x 19'5"    |
| Bedroom 1             | 5.23m x 2.82m  | 17'2" x 9'3"     |
| Bedroom 2             | 4.03m x 3.25m  | 13'3" x 10'8"    |
| Bedroom 3             | 4.03m x 2.75m  | 13'3" x 9'0"     |
| <b>Total Area</b>     | <b>92 sq m</b> | <b>990 sq ft</b> |

Suite Apartment
  1 Bedroom Apartment
  2 Bedroom Apartment
  3 Bedroom Apartment

The dimensions given are accurate to within plus or minus two inches (50mm) from floor level and include wardrobe spaces where applicable. They are not intended to be used for carpet sizes, appliance space or items of furniture. The information is for general guidance only. S=Services \*\*=Firefighters lift access only.





# Floor 7



## Apartment 244

|                       |                |                   |
|-----------------------|----------------|-------------------|
| Kitchen/Living/Dining | 7.86m x 5.99m  | 25'9" x 19'8"     |
| Bedroom 1             | 5.56m x 2.75m  | 18'3" x 9'0"      |
| Bedroom 2             | 4.21m x 3.15m  | 13'10" x 10'4"    |
| Bedroom 3             | 4.21m x 2.85m  | 13'10" x 9'4"     |
| <b>Total Area</b>     | <b>97 sq m</b> | <b>1044 sq ft</b> |

## Apartment 245

|                       |                |                   |
|-----------------------|----------------|-------------------|
| Kitchen/Living/Dining | 7.86m x 6.02m  | 25'9" x 19'9"     |
| Bedroom 1             | 5.56m x 2.75m  | 18'3" x 9'0"      |
| Bedroom 2             | 4.21m x 3.15m  | 13'10" x 10'4"    |
| Bedroom 3             | 4.21m x 2.85m  | 13'10" x 9'4"     |
| <b>Total Area</b>     | <b>97 sq m</b> | <b>1044 sq ft</b> |

## Apartment 246

|                       |                 |                   |
|-----------------------|-----------------|-------------------|
| Kitchen/Living/Dining | 7.86m x 6.32m   | 25'9" x 20'9"     |
| Bedroom 1             | 5.31m x 3.02m   | 17'5" x 9'11"     |
| Bedroom 2             | 4.26m x 3.10m   | 14'0" x 10'2"     |
| Bedroom 3             | 4.26m x 3.00m   | 14'0" x 9'10"     |
| <b>Total Area</b>     | <b>115 sq m</b> | <b>1238 sq ft</b> |

## Apartment 247

|                       |                 |                   |
|-----------------------|-----------------|-------------------|
| Kitchen/Living/Dining | 8.31m x 4.70m   | 27'3" x 15'5"     |
| Bedroom 1             | 6.29m x 3.15m   | 20'8" x 10'4"     |
| Bedroom 2             | 4.02m x 3.81m   | 13'2" x 12'6"     |
| Bedroom 3             | 5.99m x 2.96m   | 19'8" x 9'9"      |
| <b>Total Area</b>     | <b>116 sq m</b> | <b>1249 sq ft</b> |

## Apartment 248

|                       |                |                  |
|-----------------------|----------------|------------------|
| Kitchen/Living/Dining | 8.64m x 5.56m  | 28'4" x 18'3"    |
| Bedroom               | 5.56m x 2.74m  | 18'3" x 9'0"     |
| <b>Total Area</b>     | <b>57 sq m</b> | <b>614 sq ft</b> |

## Apartment 249

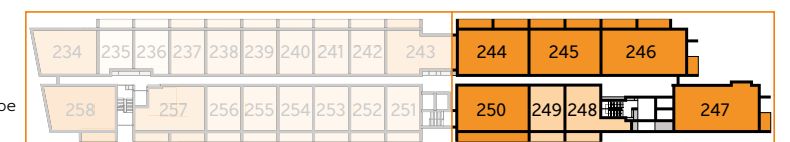
|                       |                |                  |
|-----------------------|----------------|------------------|
| Kitchen/Living/Dining | 7.86m x 3.12m  | 25'9" x 10'3"    |
| Bedroom               | 4.03m x 2.78m  | 13'3" x 9'1"     |
| <b>Total Area</b>     | <b>47 sq m</b> | <b>506 sq ft</b> |

## Apartment 250

|                       |                |                   |
|-----------------------|----------------|-------------------|
| Kitchen/Living/Dining | 7.86m x 5.99m  | 25'9" x 19'8"     |
| Bedroom 1             | 5.56m x 2.75m  | 18'3" x 9'0"      |
| Bedroom 2             | 4.21m x 3.15m  | 13'10" x 10'4"    |
| Bedroom 3             | 4.21m x 2.85m  | 13'10" x 9'4"     |
| <b>Total Area</b>     | <b>97 sq m</b> | <b>1044 sq ft</b> |

Suite Apartment
  1 Bedroom Apartment
  2 Bedroom Apartment
  3 Bedroom Apartment

The dimensions given are accurate to within plus or minus two inches (50mm) from floor level and include wardrobe spaces where applicable. They are not intended to be used for carpet sizes, appliance space or items of furniture. The information is for general guidance only. S=Services.





# Floor 8



**Apartment 259**

|                       |                 |                   |
|-----------------------|-----------------|-------------------|
| Kitchen/Living/Dining | 7.53m x 6.56m   | 24'8" x 21'6"     |
| Bedroom 1             | 6.85m x 3.00m   | 22'6" x 9'10"     |
| Bedroom 2             | 4.41m x 3.57m   | 14'6" x 11'9"     |
| Bedroom 3             | 4.32m x 2.80m   | 14'2" x 9'2"      |
| <b>Total Area</b>     | <b>116 sq m</b> | <b>1249 sq ft</b> |

**Apartment 262**

|                       |                |                  |
|-----------------------|----------------|------------------|
| Kitchen/Living/Dining | 7.86m x 3.52m  | 25'9" x 11'7"    |
| Bedroom 1             | 5.56m x 2.75m  | 18'3" x 9'0"     |
| Bedroom 2             | 4.21m x 3.17m  | 13'10" x 10'5"   |
| <b>Total Area</b>     | <b>72 sq m</b> | <b>775 sq ft</b> |

**Apartment 272**

|                       |                |                  |
|-----------------------|----------------|------------------|
| Kitchen/Living/Dining | 7.86m x 3.42m  | 25'9" x 11'3"    |
| Bedroom 1             | 5.56m x 2.75m  | 18'3" x 9'0"     |
| Bedroom 2             | 4.21m x 3.07m  | 13'10" x 10'1"   |
| <b>Total Area</b>     | <b>71 sq m</b> | <b>764 sq ft</b> |

**Apartment 275**

|                       |                |                  |
|-----------------------|----------------|------------------|
| Kitchen/Living/Dining | 7.86m x 3.52m  | 25'9" x 11'7"    |
| Bedroom 1             | 5.56m x 2.75m  | 18'3" x 9'0"     |
| Bedroom 2             | 4.21m x 3.17m  | 13'10" x 10'5"   |
| <b>Total Area</b>     | <b>72 sq m</b> | <b>775 sq ft</b> |

**Apartment 260**

|                       |                |                   |
|-----------------------|----------------|-------------------|
| Kitchen/Living/Dining | 7.75m x 6.00m  | 25'5" x 19'8"     |
| Bedroom 1             | 5.56m x 2.75m  | 18'3" x 9'0"      |
| Bedroom 2             | 4.33m x 3.17m  | 14'2" x 10'5"     |
| Bedroom 3             | 4.33m x 2.75m  | 14'2" x 9'0"      |
| <b>Total Area</b>     | <b>94 sq m</b> | <b>1012 sq ft</b> |

**Apartment 263**

|                       |                |                  |
|-----------------------|----------------|------------------|
| Kitchen/Living/Dining | 7.86m x 3.52m  | 25'9" x 11'7"    |
| Bedroom 1             | 5.56m x 2.75m  | 18'3" x 9'0"     |
| Bedroom 2             | 4.21m x 3.17m  | 13'10" x 10'5"   |
| <b>Total Area</b>     | <b>72 sq m</b> | <b>775 sq ft</b> |

**Apartment 273**

|                       |                |                  |
|-----------------------|----------------|------------------|
| Kitchen/Living/Dining | 7.86m x 3.52m  | 25'9" x 11'7"    |
| Bedroom 1             | 5.56m x 2.75m  | 18'3" x 9'0"     |
| Bedroom 2             | 4.21m x 3.17m  | 13'10" x 10'5"   |
| <b>Total Area</b>     | <b>72 sq m</b> | <b>775 sq ft</b> |

**Apartment 276**

|                       |                |                  |
|-----------------------|----------------|------------------|
| Kitchen/Living/Dining | 7.46m x 6.20m  | 24'6" x 20'4"    |
| Bedroom 1             | 5.31m x 3.00m  | 17'5" x 9'10"    |
| Bedroom 2             | 3.86m x 2.92m  | 12'8" x 9'7"     |
| <b>Total Area</b>     | <b>85 sq m</b> | <b>915 sq ft</b> |

**Apartment 261**

|                       |                |                  |
|-----------------------|----------------|------------------|
| Kitchen/Living/Dining | 7.86m x 3.52m  | 25'9" x 11'7"    |
| Bedroom 1             | 5.56m x 2.75m  | 18'3" x 9'0"     |
| Bedroom 2             | 4.21m x 3.17m  | 13'10" x 10'5"   |
| <b>Total Area</b>     | <b>72 sq m</b> | <b>775 sq ft</b> |

**Apartment 264**

|                       |                 |                   |
|-----------------------|-----------------|-------------------|
| Kitchen/Living/Dining | 7.86m x 5.42m   | 25'9" x 17'9"     |
| Bedroom 1             | 4.34m x 3.70m   | 14'3" x 12'2"     |
| Bedroom 2             | 4.80m x 2.85m   | 15'9" x 9'4"      |
| Bedroom 3             | 4.60m x 3.32m   | 15'1" x 10'11"    |
| <b>Total Area</b>     | <b>110 sq m</b> | <b>1184 sq ft</b> |

**Apartment 274**

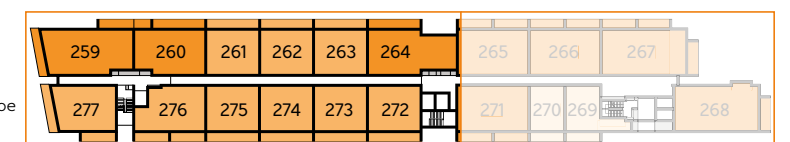
|                       |                |                  |
|-----------------------|----------------|------------------|
| Kitchen/Living/Dining | 7.86m x 3.52m  | 25'9" x 11'7"    |
| Bedroom 1             | 5.56m x 2.75m  | 18'3" x 9'0"     |
| Bedroom 2             | 4.21m x 3.17m  | 13'10" x 10'5"   |
| <b>Total Area</b>     | <b>72 sq m</b> | <b>775 sq ft</b> |

**Apartment 277**

|                       |                |                  |
|-----------------------|----------------|------------------|
| Kitchen/Living/Dining | 7.61m x 4.98m  | 25'0" x 16'4"    |
| Bedroom 1             | 5.23m x 2.82m  | 17'2" x 9'3"     |
| Bedroom 2             | 4.03m x 3.25m  | 13'3" x 10'8"    |
| <b>Total Area</b>     | <b>80 sq m</b> | <b>861 sq ft</b> |

2 Bedroom Apartment 3 Bedroom Apartment

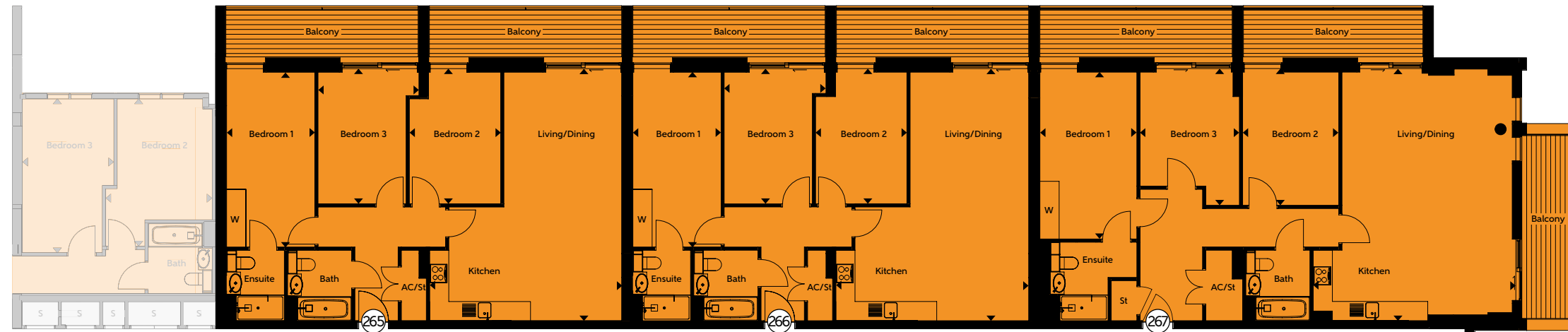
The dimensions given are accurate to within plus or minus two inches (50mm) from floor level and include wardrobe spaces where applicable. They are not intended to be used for carpet sizes, appliance space or items of furniture. The information is for general guidance only. S=Services \*\*=Firefighters lift access only.



# Floor 8

View towards  
East & West Reservoir  
& Stratford

View towards  
Canary Wharf



View towards  
The City &  
Emirates Stadium



View towards  
The City &  
Emirates Stadium

View towards  
The BT Tower &  
Regent's Park

Restricted Access to  
The Cylinder Tower

View towards  
The BT Tower &  
Regent's Park



## Apartment 265

|                       |                |                   |
|-----------------------|----------------|-------------------|
| Kitchen/Living/Dining | 7.86m x 5.99m  | 25'9" x 19'8"     |
| Bedroom 1             | 5.56m x 2.75m  | 18'3" x 9'0"      |
| Bedroom 2             | 4.21m x 3.15m  | 13'10" x 10'4"    |
| Bedroom 3             | 4.21m x 2.85m  | 13'10" x 9'4"     |
| <b>Total Area</b>     | <b>96 sq m</b> | <b>1033 sq ft</b> |

## Apartment 267

|                       |                 |                   |
|-----------------------|-----------------|-------------------|
| Kitchen/Living/Dining | 7.86m x 6.32m   | 25'9" x 20'9"     |
| Bedroom 1             | 5.31m x 3.02m   | 17'5" x 9'11"     |
| Bedroom 2             | 4.26m x 3.10m   | 14'0" x 10'2"     |
| Bedroom 3             | 4.26m x 3.00m   | 14'0" x 9'10"     |
| <b>Total Area</b>     | <b>115 sq m</b> | <b>1238 sq ft</b> |

## Apartment 269

|                       |                |                  |
|-----------------------|----------------|------------------|
| Kitchen/Living/Dining | 8.64m x 5.56m  | 28'4" x 18'3"    |
| Bedroom               | 5.56m x 2.74m  | 18'3" x 9'0"     |
| <b>Total Area</b>     | <b>57 sq m</b> | <b>614 sq ft</b> |

## Apartment 270

|                       |                |                  |
|-----------------------|----------------|------------------|
| Kitchen/Living/Dining | 7.86m x 3.12m  | 25'9" x 10'3"    |
| Bedroom               | 4.03m x 2.78m  | 13'3" x 9'1"     |
| <b>Total Area</b>     | <b>47 sq m</b> | <b>506 sq ft</b> |

## Apartment 271

|                       |                |                   |
|-----------------------|----------------|-------------------|
| Kitchen/Living/Dining | 7.86m x 5.99m  | 25'9" x 19'8"     |
| Bedroom 1             | 5.56m x 2.75m  | 18'3" x 9'0"      |
| Bedroom 2             | 4.21m x 3.15m  | 13'10" x 10'4"    |
| Bedroom 3             | 4.21m x 2.85m  | 13'10" x 9'4"     |
| <b>Total Area</b>     | <b>96 sq m</b> | <b>1033 sq ft</b> |

## Apartment 266

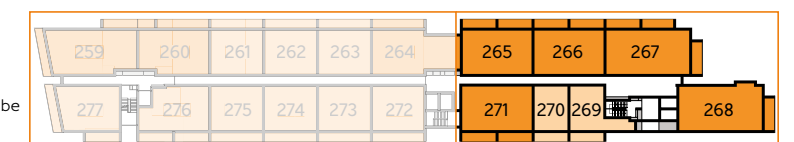
|                       |                |                   |
|-----------------------|----------------|-------------------|
| Kitchen/Living/Dining | 7.86m x 6.02m  | 25'9" x 19'9"     |
| Bedroom 1             | 5.56m x 2.75m  | 18'3" x 9'0"      |
| Bedroom 2             | 4.21m x 3.15m  | 13'10" x 10'4"    |
| Bedroom 3             | 4.21m x 2.85m  | 13'10" x 9'4"     |
| <b>Total Area</b>     | <b>96 sq m</b> | <b>1033 sq ft</b> |

## Apartment 268

|                       |                 |                   |
|-----------------------|-----------------|-------------------|
| Kitchen/Living/Dining | 8.31m x 4.70m   | 27'3" x 15'5"     |
| Bedroom 1             | 6.29m x 3.15m   | 20'8" x 10'4"     |
| Bedroom 2             | 4.02m x 3.81m   | 13'2" x 12'6"     |
| Bedroom 3             | 5.99m x 2.96m   | 19'8" x 9'9"      |
| <b>Total Area</b>     | <b>116 sq m</b> | <b>1249 sq ft</b> |

2 Bedroom Apartment 3 Bedroom Apartment

The dimensions given are accurate to within plus or minus two inches (50mm) from floor level and include wardrobe spaces where applicable. They are not intended to be used for carpet sizes, appliance space or items of furniture. The information is for general guidance only. S=Services.





# Floor 9



**Apartment 278**

|                       |                |                   |
|-----------------------|----------------|-------------------|
| Kitchen/Living/Dining | 7.52m x 4.41m  | 24'8" x 14'6"     |
| Bedroom 1             | 5.54m x 2.87m  | 18'2" x 9'5"      |
| Bedroom 2             | 4.31m x 2.75m  | 14'2" x 9'0"      |
| Bedroom 3             | 4.31m x 2.75m  | 14'2" x 9'0"      |
| <b>Total Area</b>     | <b>94 sq m</b> | <b>1012 sq ft</b> |

**Apartment 281**

|                       |                |                   |
|-----------------------|----------------|-------------------|
| Kitchen/Living/Dining | 7.86m x 6.02m  | 25'9" x 19'9"     |
| Bedroom 1             | 5.56m x 2.75m  | 18'3" x 9'0"      |
| Bedroom 2             | 4.21m x 3.17m  | 13'10" x 10'5"    |
| Bedroom 3             | 4.21m x 2.82m  | 13'10" x 9'3"     |
| <b>Total Area</b>     | <b>96 sq m</b> | <b>1033 sq ft</b> |

**Apartment 291**

|                       |                |                  |
|-----------------------|----------------|------------------|
| Kitchen/Living/Dining | 7.86m x 3.42m  | 25'9" x 11'3"    |
| Bedroom 1             | 5.56m x 2.75m  | 18'3" x 9'0"     |
| Bedroom 2             | 4.21m x 3.07m  | 13'10" x 10'1"   |
| <b>Total Area</b>     | <b>71 sq m</b> | <b>764 sq ft</b> |

**Apartment 294**

|                       |                |                  |
|-----------------------|----------------|------------------|
| Kitchen/Living/Dining | 7.86m x 3.52m  | 25'9" x 11'7"    |
| Bedroom 1             | 5.56m x 2.75m  | 18'3" x 9'0"     |
| Bedroom 2             | 4.21m x 3.17m  | 13'10" x 10'5"   |
| <b>Total Area</b>     | <b>72 sq m</b> | <b>775 sq ft</b> |

**Apartment 279**

|                       |                |                  |
|-----------------------|----------------|------------------|
| Kitchen/Living/Dining | 7.86m x 4.65m  | 25'9" x 15'3"    |
| Bedroom 1             | 5.06m x 2.84m  | 16'7" x 9'4"     |
| Bedroom 2             | 3.61m x 3.07m  | 11'10" x 10'1"   |
| Bedroom 3             | 3.61m x 3.13m  | 11'10" x 10'3"   |
| <b>Total Area</b>     | <b>91 sq m</b> | <b>980 sq ft</b> |

**Apartment 282**

|                       |                |                  |
|-----------------------|----------------|------------------|
| Kitchen/Living/Dining | 7.86m x 3.52m  | 25'9" x 11'7"    |
| Bedroom 1             | 5.56m x 2.75m  | 18'3" x 9'0"     |
| Bedroom 2             | 4.21m x 3.17m  | 13'10" x 10'5"   |
| <b>Total Area</b>     | <b>72 sq m</b> | <b>775 sq ft</b> |

**Apartment 292**

|                       |                |                  |
|-----------------------|----------------|------------------|
| Kitchen/Living/Dining | 7.86m x 3.52m  | 25'9" x 11'7"    |
| Bedroom 1             | 5.56m x 2.75m  | 18'3" x 9'0"     |
| Bedroom 2             | 4.21m x 3.17m  | 13'10" x 10'5"   |
| <b>Total Area</b>     | <b>72 sq m</b> | <b>775 sq ft</b> |

**Apartment 295**

|                       |                |                  |
|-----------------------|----------------|------------------|
| Kitchen/Living/Dining | 7.46m x 6.20m  | 24'6" x 20'4"    |
| Bedroom 1             | 5.31m x 3.00m  | 17'5" x 9'10"    |
| Bedroom 2             | 3.86m x 2.92m  | 12'8" x 9'7"     |
| <b>Total Area</b>     | <b>85 sq m</b> | <b>915 sq ft</b> |

**Apartment 280**

|                       |                |                  |
|-----------------------|----------------|------------------|
| Kitchen/Living/Dining | 7.86m x 3.52m  | 25'9" x 11'7"    |
| Bedroom 1             | 5.56m x 2.75m  | 18'3" x 9'0"     |
| Bedroom 2             | 4.21m x 3.17m  | 13'10" x 10'5"   |
| <b>Total Area</b>     | <b>72 sq m</b> | <b>775 sq ft</b> |

**Apartment 283**

|                       |                 |                   |
|-----------------------|-----------------|-------------------|
| Kitchen/Living/Dining | 7.86m x 5.42m   | 25'9" x 17'9"     |
| Bedroom 1             | 4.34m x 3.70m   | 14'3" x 12'2"     |
| Bedroom 2             | 4.80m x 2.85m   | 15'9" x 9'4"      |
| Bedroom 3             | 4.60m x 3.32m   | 15'1" x 10'11"    |
| <b>Total Area</b>     | <b>110 sq m</b> | <b>1184 sq ft</b> |

**Apartment 293**

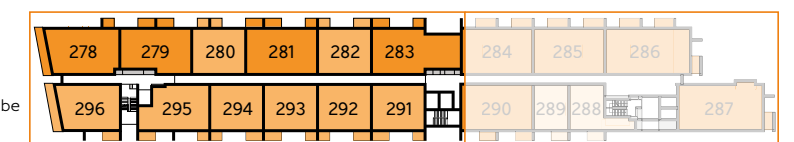
|                       |                |                  |
|-----------------------|----------------|------------------|
| Kitchen/Living/Dining | 7.86m x 3.52m  | 25'9" x 11'7"    |
| Bedroom 1             | 5.56m x 2.75m  | 18'3" x 9'0"     |
| Bedroom 2             | 4.21m x 3.17m  | 13'10" x 10'5"   |
| <b>Total Area</b>     | <b>72 sq m</b> | <b>775 sq ft</b> |

**Apartment 296**

|                       |                |                  |
|-----------------------|----------------|------------------|
| Kitchen/Living/Dining | 7.61m x 4.98m  | 25'0" x 16'4"    |
| Bedroom 1             | 5.23m x 2.82m  | 17'2" x 9'3"     |
| Bedroom 2             | 4.03m x 3.25m  | 13'3" x 10'8"    |
| <b>Total Area</b>     | <b>80 sq m</b> | <b>861 sq ft</b> |

1 Bedroom Apartment 2 Bedroom Apartment 3 Bedroom Apartment

The dimensions given are accurate to within plus or minus two inches (50mm) from floor level and include wardrobe spaces where applicable. They are not intended to be used for carpet sizes, appliance space or items of furniture. The information is for general guidance only. S=Services \*\*=Firefighters lift access only.



# Floor 9



## Apartment 284

|                       |                |                   |
|-----------------------|----------------|-------------------|
| Kitchen/Living/Dining | 7.86m x 5.99m  | 25'9" x 19'8"     |
| Bedroom 1             | 5.56m x 2.75m  | 18'3" x 9'0"      |
| Bedroom 2             | 4.21m x 3.15m  | 13'10" x 10'4"    |
| Bedroom 3             | 4.21m x 2.85m  | 13'10" x 9'4"     |
| <b>Total Area</b>     | <b>96 sq m</b> | <b>1033 sq ft</b> |

## Apartment 285

|                       |                |                   |
|-----------------------|----------------|-------------------|
| Kitchen/Living/Dining | 7.86m x 6.02m  | 25'9" x 19'9"     |
| Bedroom 1             | 5.56m x 2.75m  | 18'3" x 9'0"      |
| Bedroom 2             | 4.21m x 3.15m  | 13'10" x 10'4"    |
| Bedroom 3             | 4.21m x 2.85m  | 13'10" x 9'4"     |
| <b>Total Area</b>     | <b>96 sq m</b> | <b>1033 sq ft</b> |

## Apartment 286

|                       |                 |                   |
|-----------------------|-----------------|-------------------|
| Kitchen/Living/Dining | 7.86m x 6.32m   | 25'9" x 20'9"     |
| Bedroom 1             | 5.31m x 3.02m   | 17'5" x 9'11"     |
| Bedroom 2             | 4.26m x 3.10m   | 14'0" x 10'2"     |
| Bedroom 3             | 4.26m x 3.00m   | 14'0" x 9'10"     |
| <b>Total Area</b>     | <b>115 sq m</b> | <b>1238 sq ft</b> |

## Apartment 287

|                       |                 |                   |
|-----------------------|-----------------|-------------------|
| Kitchen/Living/Dining | 8.31m x 4.70m   | 27'3" x 15'5"     |
| Bedroom 1             | 6.29m x 3.15m   | 20'8" x 10'4"     |
| Bedroom 2             | 4.02m x 3.81m   | 13'2" x 12'6"     |
| Bedroom 3             | 5.99m x 2.96m   | 19'8" x 9'9"      |
| <b>Total Area</b>     | <b>116 sq m</b> | <b>1249 sq ft</b> |

## Apartment 288

|                       |                |                  |
|-----------------------|----------------|------------------|
| Kitchen/Living/Dining | 8.64m x 5.56m  | 28'4" x 18'3"    |
| Bedroom               | 5.56m x 2.74m  | 18'3" x 9'0"     |
| <b>Total Area</b>     | <b>57 sq m</b> | <b>614 sq ft</b> |

## Apartment 289

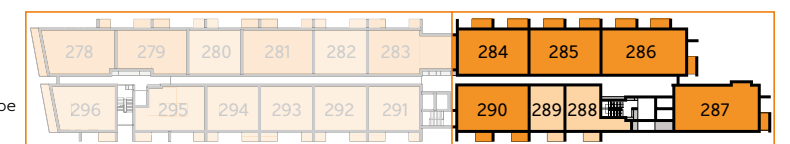
|                       |                |                  |
|-----------------------|----------------|------------------|
| Kitchen/Living/Dining | 7.86m x 3.12m  | 25'9" x 10'3"    |
| Bedroom               | 4.03m x 2.78m  | 13'3" x 9'1"     |
| <b>Total Area</b>     | <b>47 sq m</b> | <b>506 sq ft</b> |

## Apartment 290

|                       |                |                   |
|-----------------------|----------------|-------------------|
| Kitchen/Living/Dining | 7.86m x 5.99m  | 25'9" x 19'8"     |
| Bedroom 1             | 5.56m x 2.75m  | 18'3" x 9'0"      |
| Bedroom 2             | 4.21m x 3.15m  | 13'10" x 10'4"    |
| Bedroom 3             | 4.21m x 2.85m  | 13'10" x 9'4"     |
| <b>Total Area</b>     | <b>97 sq m</b> | <b>1044 sq ft</b> |

1 Bedroom Apartment 2 Bedroom Apartment 3 Bedroom Apartment

The dimensions given are accurate to within plus or minus two inches (50mm) from floor level and include wardrobe spaces where applicable. They are not intended to be used for carpet sizes, appliance space or items of furniture. The information is for general guidance only. S=Services.





# Floor 10

Premium Specification  
Lower Level

# Duplex Penthouses



## Apartment 297

| Lower Level           |                 |                   |  |
|-----------------------|-----------------|-------------------|--|
| Total Terrace Area    | 171 sq m        | 1844 sq ft        |  |
| Kitchen/Living/Dining | 12.55m x 10.95m | 41'2" x 35'11"    |  |
| Upper Level           |                 |                   |  |
| Bedroom 1             | 8.62m x 5.09m   | 28'3" x 16'8"     |  |
| Bedroom 2             | 5.24m x 2.75m   | 17'2" x 9'0"      |  |
| Bedroom 3             | 5.97m x 5.28m   | 19'7" x 17'4"     |  |
| Bedroom 4             | 6.55m x 3.75m   | 21'6" x 12'4"     |  |
| <b>Total Area</b>     | <b>218 sq m</b> | <b>2347 sq ft</b> |  |

## Apartment 298

| Lower Level           |                 |                   |  |
|-----------------------|-----------------|-------------------|--|
| Total Terrace Area    | 29 sq m         | 312 sq ft         |  |
| Kitchen/Living/Dining | 7.30m x 6.00m   | 23'11" x 19'8"    |  |
| Upper Level           |                 |                   |  |
| Bedroom 1             | 6.00m x 4.27m   | 19'8" x 14'0"     |  |
| Bedroom 2             | 3.74m x 3.55m   | 12'3" x 11'8"     |  |
| Bedroom 3             | 5.17m x 2.35m   | 17'0" x 7'9"      |  |
| <b>Total Area</b>     | <b>120 sq m</b> | <b>1292 sq ft</b> |  |

## Apartment 299

| Lower Level           |                 |                   |  |
|-----------------------|-----------------|-------------------|--|
| Total Terrace Area    | 29 sq m         | 312 sq ft         |  |
| Kitchen/Living/Dining | 7.30m x 6.00m   | 23'11" x 19'8"    |  |
| Upper Level           |                 |                   |  |
| Bedroom 1             | 6.00m x 4.27m   | 19'8" x 14'0"     |  |
| Bedroom 2             | 3.74m x 3.55m   | 12'3" x 11'8"     |  |
| Bedroom 3             | 5.17m x 2.35m   | 17'0" x 7'9"      |  |
| <b>Total Area</b>     | <b>120 sq m</b> | <b>1292 sq ft</b> |  |

## Apartment 300

| Lower Level           |                 |                   |  |
|-----------------------|-----------------|-------------------|--|
| Total Terrace Area    | 29 sq m         | 312 sq ft         |  |
| Kitchen/Living/Dining | 7.30m x 6.00m   | 23'11" x 19'8"    |  |
| Upper Level           |                 |                   |  |
| Bedroom 1             | 6.00m x 4.27m   | 19'8" x 14'0"     |  |
| Bedroom 2             | 3.74m x 3.55m   | 12'3" x 11'8"     |  |
| Bedroom 3             | 5.17m x 2.35m   | 17'0" x 7'9"      |  |
| <b>Total Area</b>     | <b>120 sq m</b> | <b>1292 sq ft</b> |  |

## Apartment 301

| Lower Level           |                 |                   |  |
|-----------------------|-----------------|-------------------|--|
| Total Terrace Area    | 29 sq m         | 312 sq ft         |  |
| Kitchen/Living/Dining | 7.30m x 6.00m   | 23'11" x 19'8"    |  |
| Upper Level           |                 |                   |  |
| Bedroom 1             | 6.00m x 4.27m   | 19'8" x 14'0"     |  |
| Bedroom 2             | 3.74m x 3.55m   | 12'3" x 11'8"     |  |
| Bedroom 3             | 5.17m x 2.35m   | 17'0" x 7'9"      |  |
| <b>Total Area</b>     | <b>120 sq m</b> | <b>1292 sq ft</b> |  |

## Apartment 302

| Lower Level           |                 |                   |  |
|-----------------------|-----------------|-------------------|--|
| Total Terrace Area    | 29 sq m         | 312 sq ft         |  |
| Kitchen/Living/Dining | 7.30m x 6.00m   | 23'11" x 19'8"    |  |
| Upper Level           |                 |                   |  |
| Bedroom 1             | 6.00m x 4.27m   | 19'8" x 14'0"     |  |
| Bedroom 2             | 3.74m x 3.55m   | 12'3" x 11'8"     |  |
| Bedroom 3             | 5.17m x 2.35m   | 17'0" x 7'9"      |  |
| <b>Total Area</b>     | <b>120 sq m</b> | <b>1292 sq ft</b> |  |

## Apartment 303

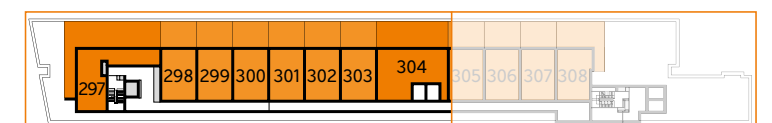
| Lower Level           |                 |                   |  |
|-----------------------|-----------------|-------------------|--|
| Total Terrace Area    | 58 sq m         | 624 sq ft         |  |
| Kitchen/Living/Dining | 12.35m x 5.96m  | 40'6" x 19'7"     |  |
| Upper Level           |                 |                   |  |
| Bedroom 1             | 8.63m x 3.61m   | 28'4" x 11'10"    |  |
| Bedroom 2             | 6.22m x 4.90m   | 20'5" x 16'1"     |  |
| Bedroom 3             | 5.95m x 4.66m   | 19'6" x 15'3"     |  |
| <b>Total Area</b>     | <b>216 sq m</b> | <b>2325 sq ft</b> |  |

## Apartment 304

| Lower Level           |                 |                   |  |
|-----------------------|-----------------|-------------------|--|
| Total Terrace Area    | 29 sq m         | 312 sq ft         |  |
| Kitchen/Living/Dining | 7.30m x 6.00m   | 23'11" x 19'8"    |  |
| Upper Level           |                 |                   |  |
| Bedroom 1             | 6.00m x 4.27m   | 19'8" x 14'0"     |  |
| Bedroom 2             | 3.74m x 3.55m   | 12'3" x 11'8"     |  |
| Bedroom 3             | 5.17m x 2.35m   | 17'0" x 7'9"      |  |
| <b>Total Area</b>     | <b>120 sq m</b> | <b>1292 sq ft</b> |  |

3 Bedroom Apartment 4 Bedroom Apartment

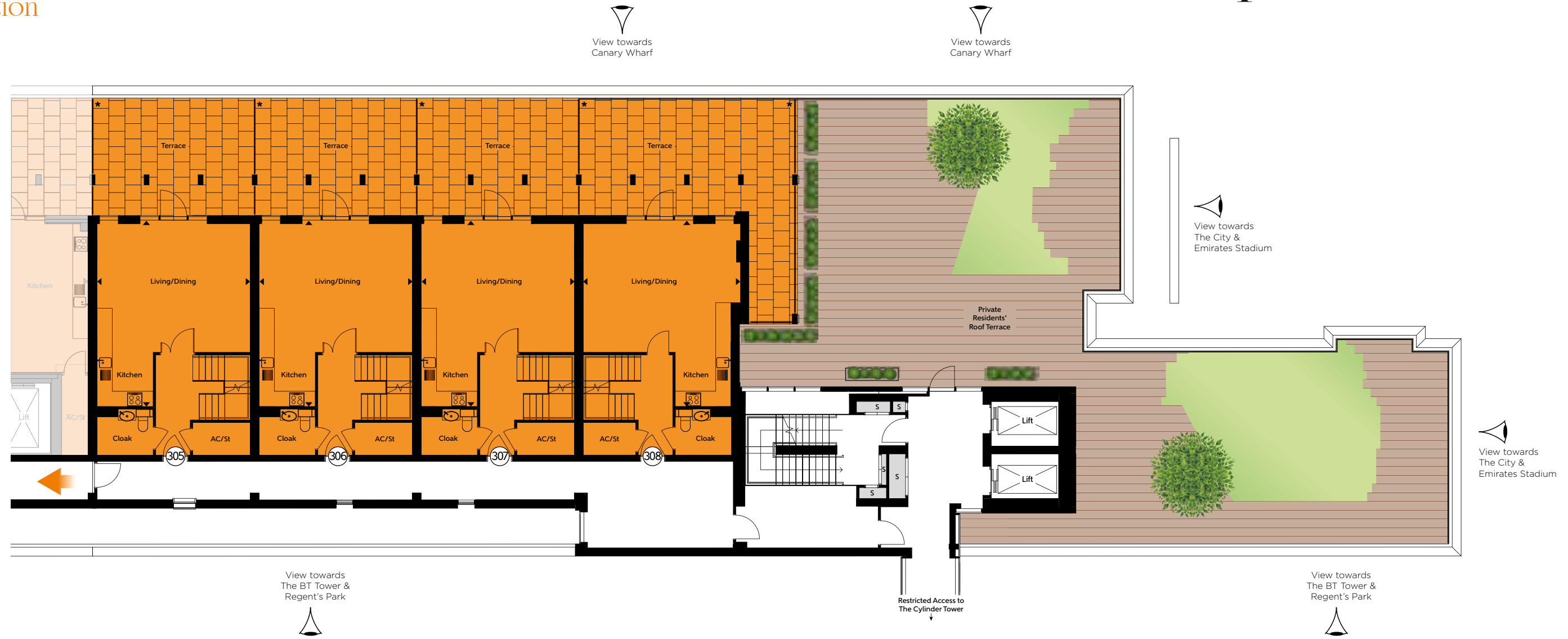
The dimensions given are accurate to within plus or minus two inches (50mm) from floor level and include wardrobe spaces where applicable. They are not intended to be used for carpet sizes, appliance space or items of furniture. The information is for general guidance only. S=Services \*\*=1.8m Privacy Screen \*\*=Firefighters lift access only.



# Floor 10

Premium Specification  
Lower Level

# Duplex Penthouses



## Apartment 305

| Lower Level           |                 |                   |
|-----------------------|-----------------|-------------------|
| Total Terrace Area    | 29 sq m         | 312 sq ft         |
| Kitchen/Living/Dining | 7.30m x 6.00m   | 23'11" x 19'8"    |
| Upper Level           |                 |                   |
| Bedroom 1             | 6.00m x 4.27m   | 19'8" x 14'0"     |
| Bedroom 2             | 3.74m x 3.55m   | 12'3" x 11'8"     |
| Bedroom 3             | 5.17m x 2.35m   | 17'0" x 7'9"      |
| <b>Total Area</b>     | <b>120 sq m</b> | <b>1292 sq ft</b> |

## Apartment 307

| Lower Level           |                 |                   |
|-----------------------|-----------------|-------------------|
| Total Terrace Area    | 29 sq m         | 312 sq ft         |
| Kitchen/Living/Dining | 7.30m x 6.00m   | 23'11" x 19'8"    |
| Upper Level           |                 |                   |
| Bedroom 1             | 6.00m x 4.27m   | 19'8" x 14'0"     |
| Bedroom 2             | 3.74m x 3.55m   | 12'3" x 11'8"     |
| Bedroom 3             | 5.17m x 2.35m   | 17'0" x 7'9"      |
| <b>Total Area</b>     | <b>120 sq m</b> | <b>1292 sq ft</b> |

## Apartment 306

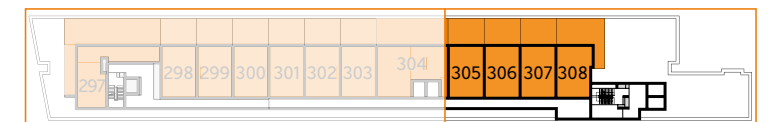
| Lower Level           |                 |                  |
|-----------------------|-----------------|------------------|
| Total Terrace Area    | 29 sq m         | 312 sq ft        |
| Kitchen/Living/Dining | 7.30m x 6.00m   | 23'11" x 19'8"   |
| Upper Level           |                 |                  |
| Bedroom 1             | 6.00m x 4.27m   | 19'8" x 14'0"    |
| Bedroom 2             | 3.74m x 3.55m   | 12'3" x 11'8"    |
| Bedroom 3             | 5.17m x 2.35m   | 17'0" x 7'9"     |
| <b>Total Area</b>     | <b>120 sq m</b> | <b>292 sq ft</b> |

## Apartment 308

| Lower Level           |                 |                   |
|-----------------------|-----------------|-------------------|
| Total Terrace Area    | 47 sq m         | 503 sq ft         |
| Kitchen/Living/Dining | 7.30m x 6.15m   | 23'11" x 20'2"    |
| Upper Level           |                 |                   |
| Bedroom 1             | 5.87m x 3.11m   | 19'3" x 10'2"     |
| Bedroom 2             | 3.75m x 3.74m   | 12'4" x 12'3"     |
| Bedroom 3             | 5.17m x 2.15m   | 17'0" x 7'1"      |
| <b>Total Area</b>     | <b>118 sq m</b> | <b>1269 sq ft</b> |

3 Bedroom Apartment 4 Bedroom Apartment

The dimensions given are accurate to within plus or minus two inches (50mm) from floor level and include wardrobe spaces where applicable. They are not intended to be used for carpet sizes, appliance space or items of furniture. The information is for general guidance only. S=Services \*1.8m Privacy Screen.





# Floor 11

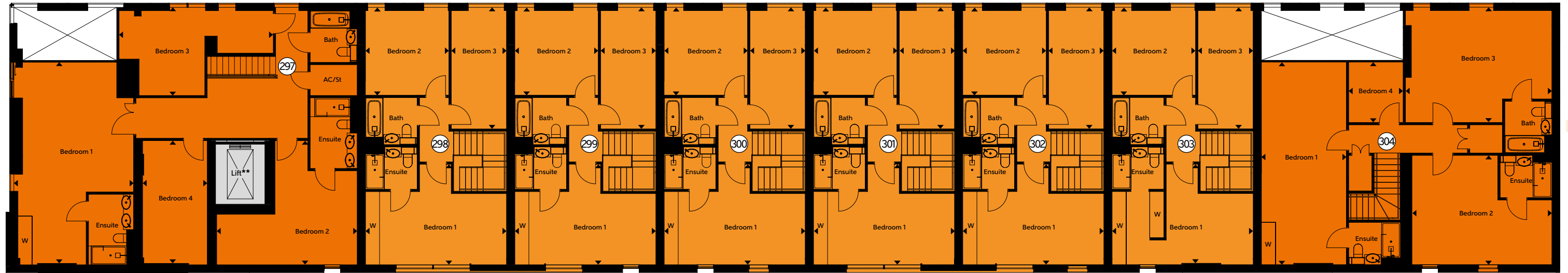
Premium Specification  
Upper Level

# Duplex Penthouses

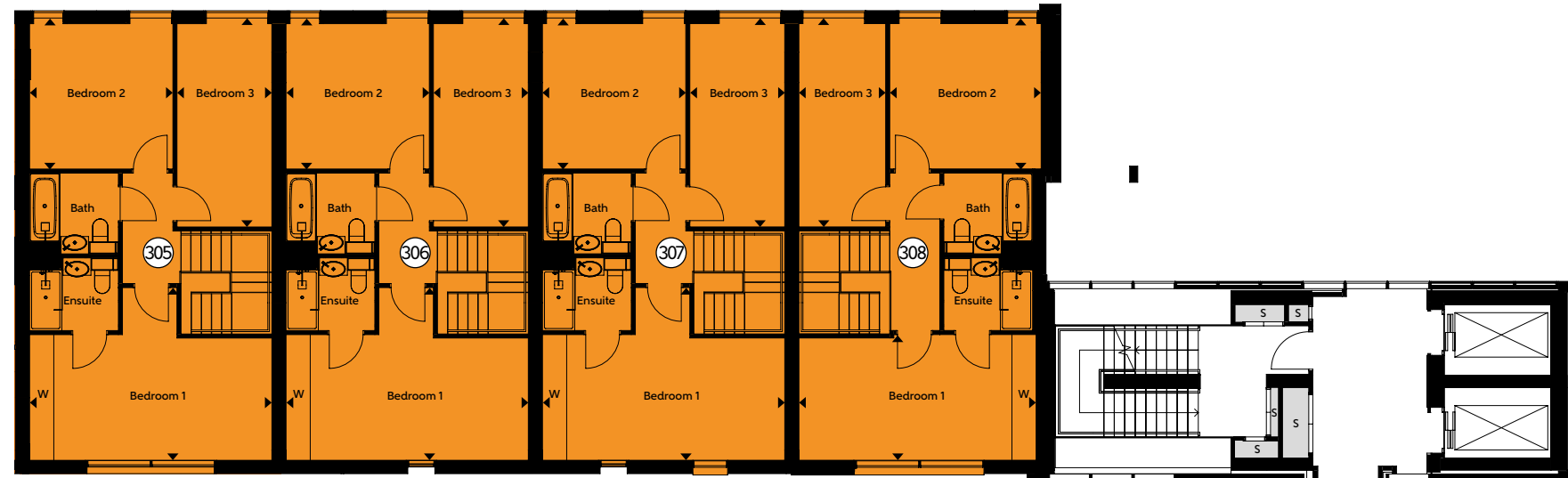
View towards  
Stratford, Finsbury Park  
& East & West Reservoir

View towards  
Canary Wharf

View towards  
Finsbury Park



View towards  
The BT Tower &  
Regent's Park



View towards  
The BT Tower &  
Regent's Park

Restricted Access to  
The Cylinder Tower

## Apartment 297

|                    |  |                   |               |
|--------------------|--|-------------------|---------------|
| <b>Lower Level</b> | Kitchen/Living/Dining 12.55m x 10.95m 41'2" x 35'11" |                   |               |
| <b>Upper Level</b> | Bedroom 1  | 8.62m x 5.09m     | 28'3" x 16'8" |
|                    | Bedroom 2  | 5.24m x 2.75m     | 17'2" x 9'0"  |
|                    | Bedroom 3  | 5.97m x 5.28m     | 19'7" x 17'4" |
|                    | Bedroom 4  | 6.55m x 3.75m     | 21'6" x 12'4" |
| <b>Total Area</b>  | <b>218 sq m</b>                                      | <b>2347 sq ft</b> |               |

## Apartment 298

|                    |  |                   |               |
|--------------------|--|-------------------|---------------|
| <b>Lower Level</b> | Kitchen/Living/Dining 7.30m x 6.00m 23'11" x 19'8" |                   |               |
| <b>Upper Level</b> | Bedroom 1  | 6.00m x 4.27m     | 19'8" x 14'0" |
|                    | Bedroom 2  | 3.74m x 3.55m     | 12'3" x 11'8" |
|                    | Bedroom 3  | 5.17m x 2.35m     | 17'0" x 7'9"  |
| <b>Total Area</b>  | <b>120 sq m</b>                                    | <b>1292 sq ft</b> |               |

## Apartment 299

|                    |  |                   |               |
|--------------------|--|-------------------|---------------|
| <b>Lower Level</b> | Kitchen/Living/Dining 7.30m x 6.00m 23'11" x 19'8" |                   |               |
| <b>Upper Level</b> | Bedroom 1  | 6.00m x 4.27m     | 19'8" x 14'0" |
|                    | Bedroom 2  | 3.74m x 3.55m     | 12'3" x 11'8" |
|                    | Bedroom 3  | 5.17m x 2.35m     | 17'0" x 7'9"  |
| <b>Total Area</b>  | <b>120 sq m</b>                                    | <b>1292 sq ft</b> |               |

## Apartment 300

|                    |  |                   |               |
|--------------------|--|-------------------|---------------|
| <b>Lower Level</b> | Kitchen/Living/Dining 7.30m x 6.00m 23'11" x 19'8" |                   |               |
| <b>Upper Level</b> | Bedroom 1  | 6.00m x 4.27m     | 19'8" x 14'0" |
|                    | Bedroom 2  | 3.74m x 3.55m     | 12'3" x 11'8" |
|                    | Bedroom 3  | 5.17m x 2.35m     | 17'0" x 7'9"  |
| <b>Total Area</b>  | <b>120 sq m</b>                                    | <b>1292 sq ft</b> |               |

## Apartment 301

|                    |  |                   |               |
|--------------------|--|-------------------|---------------|
| <b>Lower Level</b> | Kitchen/Living/Dining 7.30m x 6.00m 23'11" x 19'8" |                   |               |
| <b>Upper Level</b> | Bedroom 1  | 6.00m x 4.27m     | 19'8" x 14'0" |
|                    | Bedroom 2  | 3.74m x 3.55m     | 12'3" x 11'8" |
|                    | Bedroom 3  | 5.17m x 2.35m     | 17'0" x 7'9"  |
| <b>Total Area</b>  | <b>120 sq m</b>                                    | <b>1292 sq ft</b> |               |

## Apartment 302

|                    |  |                   |               |
|--------------------|--|-------------------|---------------|
| <b>Lower Level</b> | Kitchen/Living/Dining 7.30m x 6.00m 23'11" x 19'8" |                   |               |
| <b>Upper Level</b> | Bedroom 1  | 6.00m x 4.27m     | 19'8" x 14'0" |
|                    | Bedroom 2  | 3.74m x 3.55m     | 12'3" x 11'8" |
|                    | Bedroom 3  | 5.17m x 2.35m     | 17'0" x 7'9"  |
| <b>Total Area</b>  | <b>120 sq m</b>                                    | <b>1292 sq ft</b> |               |

## Apartment 303

|                    |  |                   |               |
|--------------------|--|-------------------|---------------|
| <b>Lower Level</b> | Kitchen/Living/Dining 7.30m x 6.00m 23'11" x 19'8" |                   |               |
| <b>Upper Level</b> | Bedroom 1  | 4.27m x 3.70m     | 14'0" x 12'2" |
|                    | Bedroom 2  | 3.74m x 3.55m     | 12'3" x 11'8" |
|                    | Bedroom 3  | 5.17m x 2.35m     | 17'0" x 7'9"  |
| <b>Total Area</b>  | <b>120 sq m</b>                                    | <b>1292 sq ft</b> |               |

## Apartment 304

|                    |  |                   |                |
|--------------------|--|-------------------|----------------|
| <b>Lower Level</b> | Kitchen/Living/Dining 12.35m x 5.96m 40'6" x 19'7" |                   |                |
| <b>Upper Level</b> | Bedroom 1  | 8.63m x 3.61m     | 28'4" x 11'10" |
|                    | Bedroom 2  | 6.22m x 4.90m     | 20'5" x 16'1"  |
|                    | Bedroom 3  | 5.95m x 4.66m     | 19'6" x 15'3"  |
| <b>Total Area</b>  | <b>216 sq m</b>                                    | <b>2325 sq ft</b> |                |

## Apartment 305

|                    |  |                   |               |
|--------------------|--|-------------------|---------------|
| <b>Lower Level</b> | Kitchen/Living/Dining 7.30m x 6.00m 23'11" x 19'8" |                   |               |
| <b>Upper Level</b> | Bedroom 1  | 6.00m x 4.27m     | 19'8" x 14'0" |
|                    | Bedroom 2  | 3.74m x 3.55m     | 12'3" x 11'8" |
|                    | Bedroom 3  | 5.17m x 2.35m     | 17'0" x 7'9"  |
| <b>Total Area</b>  | <b>120 sq m</b>                                    | <b>1292 sq ft</b> |               |

## Apartment 306

|                    |  |                  |               |
|--------------------|--|------------------|---------------|
| <b>Lower Level</b> | Kitchen/Living/Dining 7.30m x 6.00m 23'11" x 19'8" |                  |               |
| <b>Upper Level</b> | Bedroom 1  | 6.00m x 4.27m    | 19'8" x 14'0" |
|                    | Bedroom 2  | 3.74m x 3.55m    | 12'3" x 11'8" |
|                    | Bedroom 3  | 5.17m x 2.35m    | 17'0" x 7'9"  |
| <b>Total Area</b>  | <b>120 sq m</b>                                    | <b>292 sq ft</b> |               |

## Apartment 307

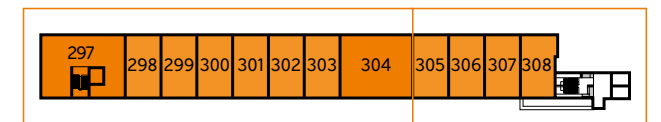
|                    |  |                   |               |
|--------------------|--|-------------------|---------------|
| <b>Lower Level</b> | Kitchen/Living/Dining 7.30m x 6.00m 23'11" x 19'8" |                   |               |
| <b>Upper Level</b> | Bedroom 1  | 6.00m x 4.27m     | 19'8" x 14'0" |
|                    | Bedroom 2  | 3.74m x 3.55m     | 12'3" x 11'8" |
|                    | Bedroom 3  | 5.17m x 2.35m     | 17'0" x 7'9"  |
| <b>Total Area</b>  | <b>120 sq m</b>                                    | <b>1292 sq ft</b> |               |

## Apartment 308

|                    |  |                   |               |
|--------------------|--|-------------------|---------------|
| <b>Lower Level</b> | Kitchen/Living/Dining 7.30m x 6.15m 23'11" x 20'2" |                   |               |
| <b>Upper Level</b> | Bedroom 1  | 5.87m x 3.11m     | 19'3" x 10'2" |
|                    | Bedroom 2  | 3.75m x 3.74m     | 12'4" x 12'3" |
|                    | Bedroom 3  | 5.17m x 2.15m     | 17'0" x 7'1"  |
| <b>Total Area</b>  | <b>118 sq m</b>                                    | <b>1269 sq ft</b> |               |

3 Bedroom Apartment 4 Bedroom Apartment

The dimensions given are accurate to within plus or minus two inches (50mm) from floor level and include wardrobe spaces where applicable. They are not intended to be used for carpet sizes, appliance space or items of furniture. The information is for general guidance only. S=Services \*\*=Firefighters lift access only.



# Setting the Mood



CITY NORTH



# Specification



## GENERAL FEATURES

- 24-hour concierge service
- Under-floor heating
- Basement bicycle storage
- The Pavilion landscaped roof garden
- Private residents' roof terrace on 10<sup>th</sup> floor of The Linear Building
- Private residents' Wi-Fi Lounge

## KITCHENS

- High-gloss white, handle-less fitted units from London designer Urban Myth
- Stone worktops
- Fully integrated Bosch appliances: stainless steel oven, induction hob, extractor hood, dishwasher, fridge/freezer, microwave & washer/dryer
- Suites & one bedroom apartments feature an oven/microwave combination
- Full height glass splash-backs
- Feature lighting under wall units

## BATH & ENSUITE SHOWER ROOMS

- Pure white Villeroy & Boch bathroom suites with chrome taps and mixers
- Bath with thermostatic shower mixer and glazed screen (where applicable)
- Large shower enclosure to ensuite/shower rooms
- Contemporary porcelain & ceramic tiling
- Large vanity mirror
- Towel warmer
- Bespoke cabinetry with built in storage & low voltage socket

## FLOORING

- Kitchen, living room & hallway in engineered timber flooring
- Bedrooms carpeted in a warm, neutral colour tone

## DÉCOR

- Smooth finish to all walls & ceilings, painted in white emulsion
- White satinwood finish to doors & woodwork

## FIXTURES & FITTINGS

- Full height entrance & internal doors
- Fitted wardrobe to main bedroom
- Satin chrome door handles
- Recessed downlights to kitchen, living room & bathrooms
- Sky+, TV and telephone outlets to living room, with TV outlets to all bedrooms

## SECURITY & WARRANTIES

- Video entryphone system to all apartments
- Monitored CCTV system
- 10 year 'Premier Guarantee' warranty
- Two year 24/7 emergency cover
- Comprehensive induction with dedicated Customer Service Manager

## PREMIUM SPECIFICATION APARTMENTS

- Fully integrated Siemens appliances: stainless steel oven, five-zone induction hob, extractor hood, dishwasher, fridge/freezer, microwave & washer/dryer
- Combined comfort cooling & warm air system with underfloor heating

Specification details are correct at time of going to print but are for guidance only and remain subject to change. Exact fittings and finishes are subject to availability at time of installation.



Photograph indicates the bathroom style at City North and computer generated images of City North interiors.

# 99.5

P E R C E N T  
OF CUSTOMERS  
SURVEYED WOULD  
RECOMMEND US\*



The Telford Homes brand delivers high quality, highly desirable new homes that are supported by first-class customer service.

Telford Homes Plc is a leading London-focused residential property developer. The Company specialises in creating, designing and building innovative landmark developments in some of the most desirable and sought after locations in the capital. The emphasis of a Telford Homes project is always focused foremost upon quality, luxury and exclusivity. A high specification, combined with some of the finest designer names, ensures that each individual property meets or exceeds the most demanding expectations. Architectural innovation and excellence ensures a true landmark development, while a fresh and imaginative approach to communal areas further ensures a truly luxurious lifestyle experience. That is why 99.5%\* of customers surveyed in 2015\* would recommend Telford Homes to their friends and family.

(\*Independent satisfaction survey results average for the year 2015.)

Telford Homes Plc, Telford House, Queensgate, Britannia Road, Waltham Cross, Herts EN8 7TF.

These particulars are for illustration only. We operate a policy of continuous improvement and individual features such as kitchen and bathroom layouts, doors, windows and elevational treatments may vary from time to time. Specification details are for guide purposes only and remain subject to change without prior notice. Should a replacement be required this will be to an equal or higher standard. Consequently these particulars should be treated as general guidance only and cannot be relied upon as accurately describing any of the Specified Matters prescribed by any order made under the Property Misdescriptions Act 1991. Nor do they constitute a contract, part of a contract or a warranty. City North is a marketing name and may not form part of the final postal address. Computer generated images are indicative only and may be subject to change. Details correct at time of going to print E and Ĉ.







**Jones Lang LaSalle Property Consultants Pte Ltd**

CEA Licence No. L3007326E

9 Raffles Place #39-00 Republic Plaza

Singapore 048619

Tel: +65 6220 3888 Fax: +65 6225 3165

Intl.sales@ap.jll.com

[www.jllresidential.com/sg/ips](http://www.jllresidential.com/sg/ips)

Jones Lang LaSalle Property Consultants Pte Ltd for themselves and for the vendors or lessors of this property whose agents they are, give notice that the particulars do not constitute, nor constitute any part of an offer or a contract. All statements, contained in these particulars as to this property are made without responsibility on the part of Jones Lang LaSalle Property Consultants Pte Ltd, or vendors or lessors. All descriptions, dimensions, and other particulars are given in good faith and are believed to be correct but any intending purchasers or tenants should not rely on them as statements or representations of fact and must satisfy themselves by inspection or otherwise as to the correctness of the each of them. No person in the employment of Jones Lang LaSalle Property Consultants Pte Ltd has any authority to make or give any representation or warranty whatever in relation to this property. This is an overseas investment. As overseas investments carry additional financial, regulatory and legal risks, investors are advised to do the necessary checks and research on the investment beforehand.